

The Data Book Project

DatasheetArchive.com has launched an ambitious effort to digitize thousands of obsolete data books and technical manuals, making them searchable via the DatasheetArchive website.

Scroll down to see the scanned document.

GENERAL DESCRIPTION

The RM1558 and RC1458 integrated circuits are high gain operational amplifiers internally compensated and constructed on a single silicon chip using the planar epitaxial process.

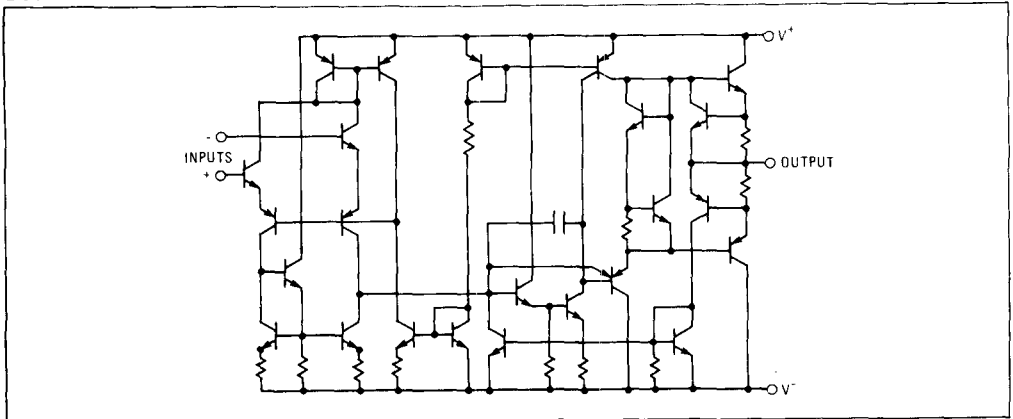
The military version, RM1558, operates over a temperature range from -55°C to $+125^{\circ}\text{C}$. The commercial version, RC1458, operates from 0°C to $+70^{\circ}\text{C}$.

Combining all of the features of the 741 with the close parameter matching and tracking of a dual device on a monolithic chip results in unique performance characteristics. It is especially well suited for applications where gain and phase matched channels are mandatory.

DESIGN FEATURES

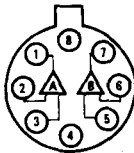
- Short-Circuit Protection
- No Frequency Compensation Required
- No Latch-Up
- Large Common-Mode and Differential Voltage Ranges
- Low Power Consumption
- Parameter Tracking Over Temperature Range
- Gain and Phase Match Between Amplifiers

SCHEMATIC DIAGRAM (1/2 Shown)



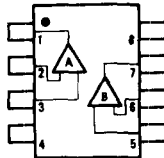
CONNECTION INFORMATION

TE (TO-99)
Metal Can Package
(Top View)



Order Part Nos.:
RM1558T, RC1458T

DE and NB Dual
In-line Package
(Top View)



Order Part No.:
RC1458NB, RC1458DE
RM1558DE

PIN	FUNCTION
1	OUTPUT (A)
2	-INPUT (A)
3	+INPUT (A)
4	V^-
5	+INPUT (B)
6	-INPUT (B)
7	OUTPUT (B)
8	V^+

Dual 741 General Purpose Operational Amplifier

ABSOLUTE MAXIMUM RATINGS

Supply Voltage	RM1558: ± 22 V RC1458: ± 18 V	Storage Temperature Range	-65°C to +150°C
Internal Power Dissipation (Note 1)	500 mW	Operating Temperature Range	RM1558: -55°C to +125°C RC1458: 0°C to +70°C
Differential Input Voltage	± 30 V	Lead Temperature (Soldering, 60s)	300°C
Input Voltage (Note 2)	± 15 V	Output Short-Circuit Duration (Note 3)	Indefinite

ELECTRICAL CHARACTERISTICS (V_{CC} = ± 15 V, T_A = 25°C unless otherwise noted)

PARAMETER	CONDITIONS	RM1558			RC1458			UNITS
		MIN	TYP	MAX	MIN	TYP	MAX	
Input Offset Voltage	R _S ≤ 10 k Ω		1.0	5.0		2.0	6.0	mV
Input Offset Current			30	200		30	200	nA
Input Bias Current			200	500		200	500	nA
Input Resistance		0.3	1.0		0.3	1.0		M Ω
Large-Signal Voltage Gain	R _L ≥ 2 k Ω V _{out} = ± 10 V	50,000	200,000		50,000	200,000		V/V
Output Voltage Swing	R _L ≥ 10 k Ω	± 12	± 14		± 12	± 14		V
	R _L ≥ 2 k Ω	± 10	± 13		± 10	± 13		V
Input Voltage Range		± 12	± 13		± 12	± 13		V
Common Mode Rejection Ratio	R _S ≤ 10 k Ω	70	90		70	90		dB
Supply Voltage Rejection Ratio	R _S ≤ 10 k Ω		30	150		30	150	μ V/V
Power Consumption			100	150		100	170	mW
Transient Response (unity gain)	V _{in} = 20mV R _L = 2 k Ω C _L ≤ 100 pF							
		Risetime		0.3		0.3		μ s
		Overshoot		5.0		5.0		%
Slew Rate (unity gain)	R _L ≥ 2 k Ω		0.5		0.5			V/ μ s
Channel Separation	f = 1 kHz		98		98			dB
The following specifications apply for -55°C \leq T _A \leq +125°C for RM1558; 0°C \leq T _A \leq +70°C for RC1458.								
Input Offset Voltage	R _L ≤ 10 k Ω			6.0			7.5	mV
Input Offset Current	+125°C, +70°C			200			300	nA
	-55°C, 0°C			500			300	
Input Bias Current	+125°C, +70°C			500			800	nA
	-55°C, +70°C			1500			800	
Large-Signal Voltage Gain	R _L ≥ 2 k Ω V _{out} = ± 10 V	25,000			25,000			
Output Voltage Swing	R _L ≥ 2 k Ω	± 12 ± 10			± 10			V
Power Consumption	V _S = ± 15 V							mW
	T _A = +125°C			150			150	
	T _A = -55°C			200			200	
Input Voltage Range		± 12			± 12			V

NOTES:

1. Rating applies for case temperatures to +125°C; derate linearly at 6.5 mW/°C for ambient temperatures above +75°C for RM1558.
2. For supply voltages less than ± 15 V, the absolute maximum input voltage is equal to the supply voltage.
3. Short-circuit may be to ground or either supply. Rating applies to +125°C case temperature or +75°C ambient temperature for RC1458.

